

milay

STUDIO



Where Every Detail Matters.

INTERIOR STYLES GUIDE

Let's talk about interior styles

Every interior style tells a story and shapes the way a space feels.

Whether you're drawn to the warmth of Mediterranean design, the simplicity of Scandinavian interiors, or the elegance of contemporary living, each style brings its own character, materials, and atmosphere.

This guide is here to help you discover what resonates with you and define a clear direction for your project. Whether it's a family home, holiday retreat, rental property, or investment, the right style should not only look beautiful but support the way the space is used.

As we explore different styles together, we focus on three essentials: balance, harmony and functionality, creating spaces that feel timeless, purposeful and uniquely yours.

We listen first

We take the time to understand your lifestyle, your vision, and the purpose of your property whether it's a home, holiday retreat, rental or investment.

Detail obsession

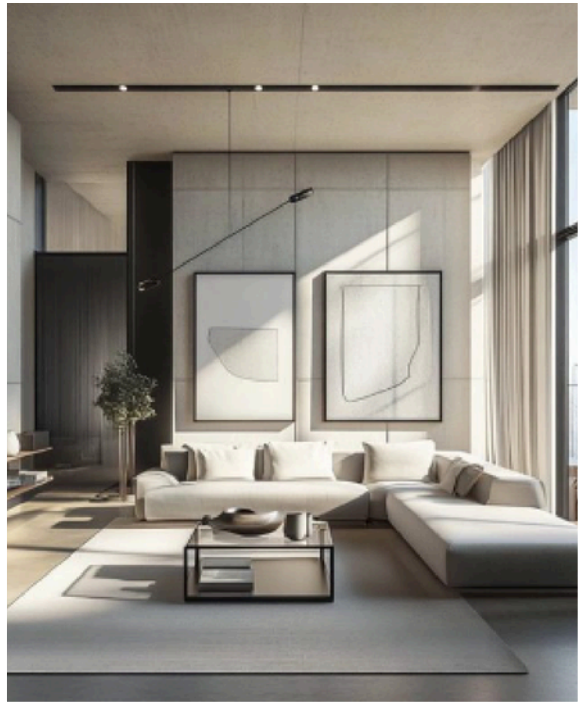
The difference between a good space and a great one is in the details. We refine every element to create interiors that feel effortless, elegant, and timeless.

Radical transparency

Clear scope. Clear timelines. Clear pricing. Every step of the process is transparent, so you always know what's happening and what's next.

Spaces worth living in

Designed for real life, not just photographs. Beautiful, functional spaces that feel effortless to live in everyday.



Modern

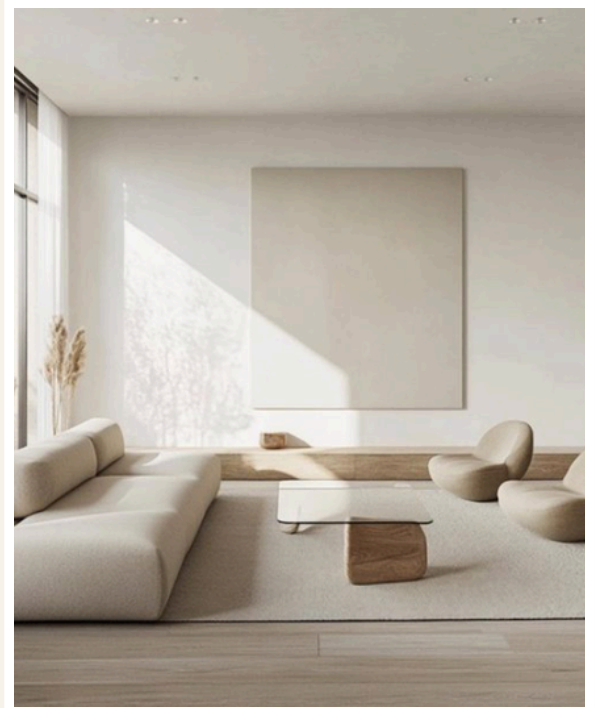
Modern design emerged in the early 20th century, focusing on function over form and rejecting unnecessary ornamentation. It celebrates clarity, balance, and simplicity. Spaces feel open, structured, and purposeful every element thoughtfully chosen.

THE LOOK	Clean lines, geometric forms, large windows, open floor plans
MATERIALS	Glass, steel, polished wood, concrete
PALETTE	Neutrals white, black, grey, beige
PERFECT FOR	Those who love streamlined design, minimal distraction, and sophisticated simplicity

Minimalist

Minimalism is about intentional living. It strips away the excess, focusing only on what truly matters. Inspired by Japanese Zen principles, it creates visual calm and mental clarity open, clutter-free, a breath of fresh air.

THE LOOK	Bare walls, clean surfaces, simple undecorated furniture
MATERIALS	Light wood, matte finishes, white walls, hidden storage
PALETTE	Mostly white, grey, black, beige with soft accents
PERFECT FOR	Clients who value serenity, simplicity, and thoughtful restraint





Scandinavian

This Nordic-born style pairs functionality with warmth, creating a cosy yet clean environment that feels lived-in but never cluttered. Natural light is key, and texture makes pared-back spaces feel inviting.

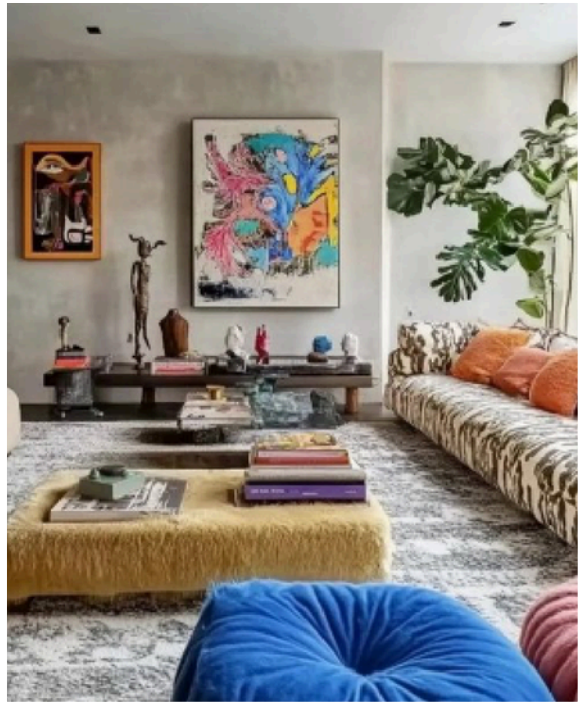
THE LOOK	Simple shapes, pale wood, soft lighting, minimal cosy decor
MATERIALS	Oak, wool, linen, ceramics, white-painted brick
PALETTE	Whites, soft greys, muted blues, beiges
PERFECT FOR	Anyone who loves a clean aesthetic with a comfortable, human touch

Industrial

Industrial interiors are bold, edgy, and raw. Inspired by converted warehouses and old factories, this style exposes materials usually hidden brick, pipes, concrete. It feels artistic and full of character.

THE LOOK	Open spaces, exposed brick, metal beams, factory lighting
MATERIALS	Concrete, steel, reclaimed wood, leather
PALETTE	Grey, black, rust, dark brown
PERFECT FOR	Urban dwellers and creatives who love gritty character and unfinished texture





Eclectic

Eclectic design is a curated blend of styles, colours, and influences maximalist in spirit but requiring skill to balance harmoniously. Vintage pieces, travel finds, and personal stories sit side by side.

THE LOOK	Mixed patterns, layered decor, bold art, unexpected pairings
MATERIALS	Anything velvet, brass, ceramics, wood
PALETTE	Varied often vibrant, playful or moody
PERFECT FOR	Free-spirited clients who want to express themselves and reject the rules

Bohemian

Bohemian interiors reflect a relaxed, carefree, creative lifestyle. Influenced by cultures worldwide especially Morocco and India it layers earthy tones with vibrant textiles, natural materials, plants, and handcrafted touches.

THE LOOK	Low seating, layered rugs, macramé, plants, colourful cushions
MATERIALS	Rattan, jute, vintage textiles, ceramics, reclaimed wood
PALETTE	Earth tones terracotta, sand, ochre with bright accents
PERFECT FOR	Travellers and creatives who value comfort, individuality, and cultural layering





Modern Classic

This style merges timeless architecture with contemporary elegance. It keeps classic moldings, symmetry, and luxurious materials but updates them with modern furniture and clean lines. Refined, elegant, forever in style.

THE LOOK Panel moldings, high ceilings, sculptural furniture, neutral layers

MATERIALS Marble, brass, velvet, crystal, dark wood

PALETTE Ivory, beige, navy, black, with gold or chrome accents

PERFECT FOR Clients who love historical charm with a polished modern twist

Contemporary

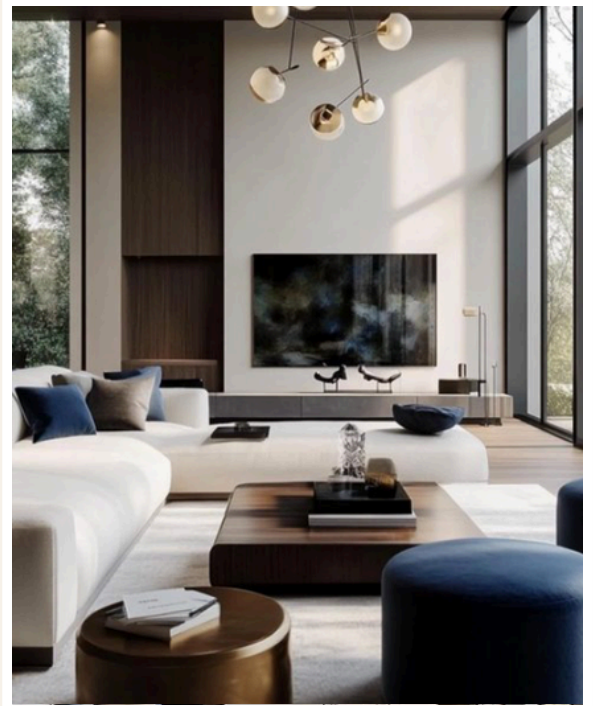
Contemporary style is ever-evolving the design of today. It borrows from minimalism and modern design but introduces softer forms, curves, and trending materials. The result is calming, elegant, gently of the moment.

THE LOOK Curved furniture, neutral palettes, open space, sculptural lighting

MATERIALS Soft woods, bouclé, stone, fluted finishes

PALETTE Greige, taupe, cream, soft browns

PERFECT FOR Trend-forward clients who want a calming, fresh, balanced space





Traditional

Rooted in European history and 18th - 19th century decor, traditional design is elegant, balanced, and timeless.

Everything is placed with intention from room symmetry to carved furniture detail. Formal yet welcoming.

THE LOOK Symmetrical layouts, rich wood, elegant fabrics, formal window dressing

MATERIALS Mahogany, cherry, silk, velvet, marble, damask

PALETTE Deep neutrals, jewel tones, cream, gold, burgundy, navy

PERFECT FOR Clients who appreciate tradition and classic elegance over trends

Farmhouse

Farmhouse style embraces comfort, charm, and function. It blends rustic vintage elements with practical modern layouts. Whether traditional or modernised, it always feels inviting and homely.

THE LOOK Exposed beams, barn doors, shiplap, vintage accessories

MATERIALS Reclaimed wood, iron, linen, ceramics

PALETTE White, warm neutrals, soft greys, sage green

PERFECT FOR Families and anyone wanting a cosy, rustic, lived-in feel





Japandi

Japandi is a hybrid of Japanese minimalism and Scandinavian warmth about mindfulness, harmony, and function. Natural materials and muted colours create peaceful, organic interiors that are calm yet comfortable.

THE LOOK Low-profile furniture, uncluttered space, light-filled rooms

MATERIALS Natural wood, stone, matte ceramics, paper lanterns

PALETTE Beige, stone, charcoal, muted greens

PERFECT FOR Clients who value tranquillity, nature-inspired design, and simple beauty

Rustic

Rustic interiors are inspired by nature and tradition — warm, welcoming, grounded. Surfaces are unpolished and raw, and the palette is drawn straight from the natural landscape.

THE LOOK Heavy wood beams, stone fireplaces, cosy textures, vintage finishes

MATERIALS Raw wood, iron, wool, leather, fur

PALETTE Browns, taupe, cream, green

PERFECT FOR Those who love natural beauty, mountain vibes, and a handmade feel





Art Deco

Art Deco is all about glamour and drama. Born in the 1920s, it blends luxury with geometry and bold colour. Think Gatsby: luxurious finishes, sharp symmetry, and striking statement pieces.

THE LOOK	Geometric patterns, symmetry, glamorous lighting, mirrored finishes
MATERIALS	Brass, lacquer, marble, glass, velvet
PALETTE	Black, gold, emerald, blush, navy
PERFECT FOR	Clients who love elegance, statement pieces, and cinematic design

Modern Mediterranean

This style brings the old-world charm of the Mediterranean together with soft minimalism. Curves, arches, plaster walls, and warm earthy tones give it a timeless, breezy elegance.

THE LOOK	Arched doorways, organic walls, airy spaces, woven lighting
MATERIALS	Terracotta, travertine, linen, natural wood
PALETTE	Warm white, sand, olive, clay
PERFECT FOR	Those who want to blend luxury with nature and timeless softness





Glamour

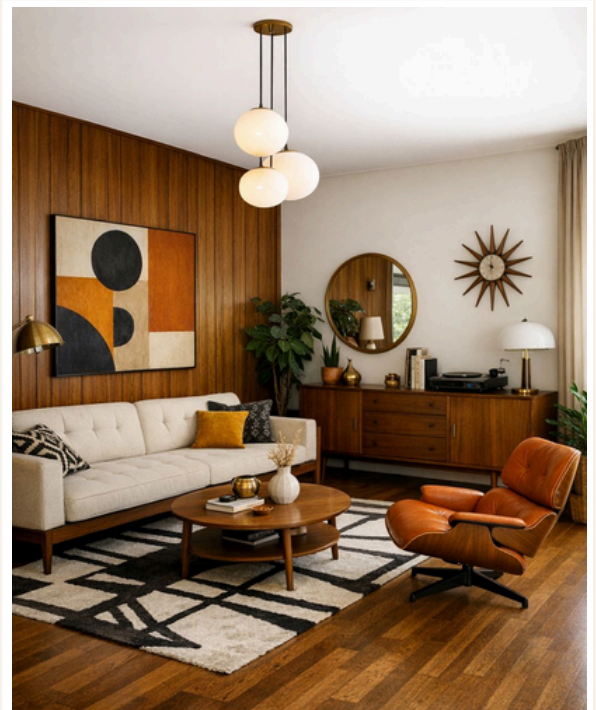
Glam style is luxurious, bold, and high-end all about shine, soft textures, and a dramatic, elegant atmosphere. Spaces feel polished and designed to impress.

THE LOOK	Plush fabrics, ornate lighting, crystal, metallics, curved furniture
MATERIALS	Velvet, silk, marble, glass, gold finishes
PALETTE	Champagne, blush, black, gold, deep jewel tones
PERFECT FOR	Clients who love elegance and luxurious detail

Mid-Century Modern

Mid-century design comes from the 50s - 60s function first with retro touches. Simple, organic, and stylish, with iconic furniture: clean lines, low profiles, tapered legs.

THE LOOK	Low furniture, clean shapes, wooden accents, abstract art
MATERIALS	Teak, walnut, leather, fibreglass, retro fabrics
PALETTE	Warm neutrals with pops of mustard, teal, or burnt orange
PERFECT FOR	Retro lovers and anyone who appreciates classic, cool design





Coastal

Coastal interiors are light, breezy, and calming. Inspired by the beach, they bring natural elements, soft textures, and easy comfort into the home barefoot luxury.

- THE LOOK** Open windows, airy fabrics, woven textures, casual furniture
- MATERIALS** Whitewashed wood, jute, linen, driftwood
- PALETTE** White, soft beige, light blue, seafoam green
- PERFECT FOR** Clients who want a relaxed, vacation-inspired home that feels fresh and airy

Where Every Detail Matters.

Found a style that speaks to you or a few you can't choose between?
That's exactly where we begin. Let's talk about the home you want to come back to.

milay
STUDIO